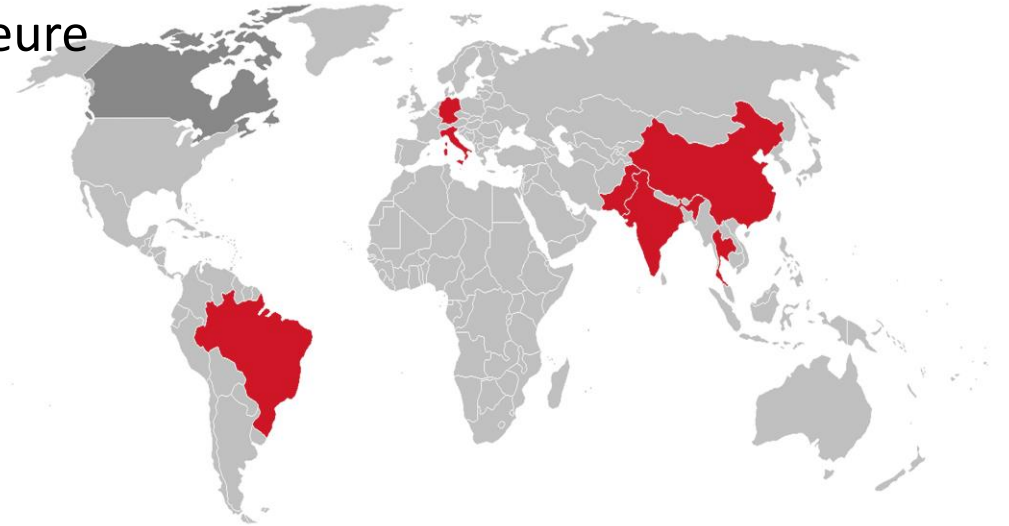


Intex Consulting Group

Das ERP als Leitzentrale zur direkten, bidirektionalen Kommunikation von Maschineneinstelldaten mit Maschinen zur Optimierung von Prozesssicherheit und Reproduzierbarkeit

- Gegründet 1995
- Entwicklung in Deutschland
- 4 weitere Niederlassungen weltweit
- Programmierer & Textilingenieure



- Langzeit Partnerschaften
- International führende Partner
- Verlässlichkeit
- Zukunftsorientiert

Intex is the only
SAP®-ERP-certified
Textile-MES provider

SAP® Member
Extended Business Program

SAP® Certified
Powered by SAP NetWeaver®

ORACLE PARTNER

IBM®

- Highlight Topics
 - Digital Transformation of Textile Production
 - Process Automation
 - Energy Management



Digital Capability Center
Aachen

DITF

DEUTSCHE INSTITUTE FÜR
TEXTIL+FASERFORSCHUNG



ITA

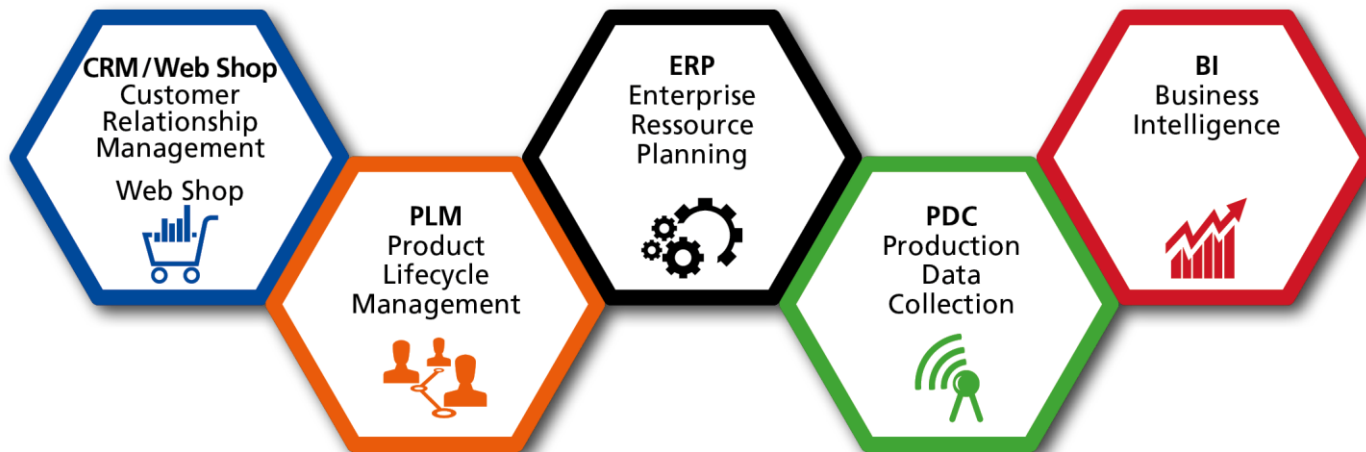
Institut für
Textiltechnik und
Lehrstuhl für
Textilmaschinenbau

RWTHAACHEN
UNIVERSITY

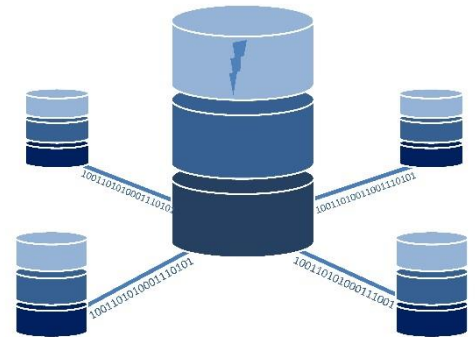


Ein Partner des





- Artikeldaten auf Maschinenterminal: einmal gespeichert, bleiben sie isoliert
- Die Eingabe auf allen Maschinen ist notwendig
- Jede Maschine muss individuell optimiert werden
- Keine Rüstzeitoptimierung basierend auf Einstellwerten
- Keine Analysemöglichkeit für Ist-Werte



Single source of truth.

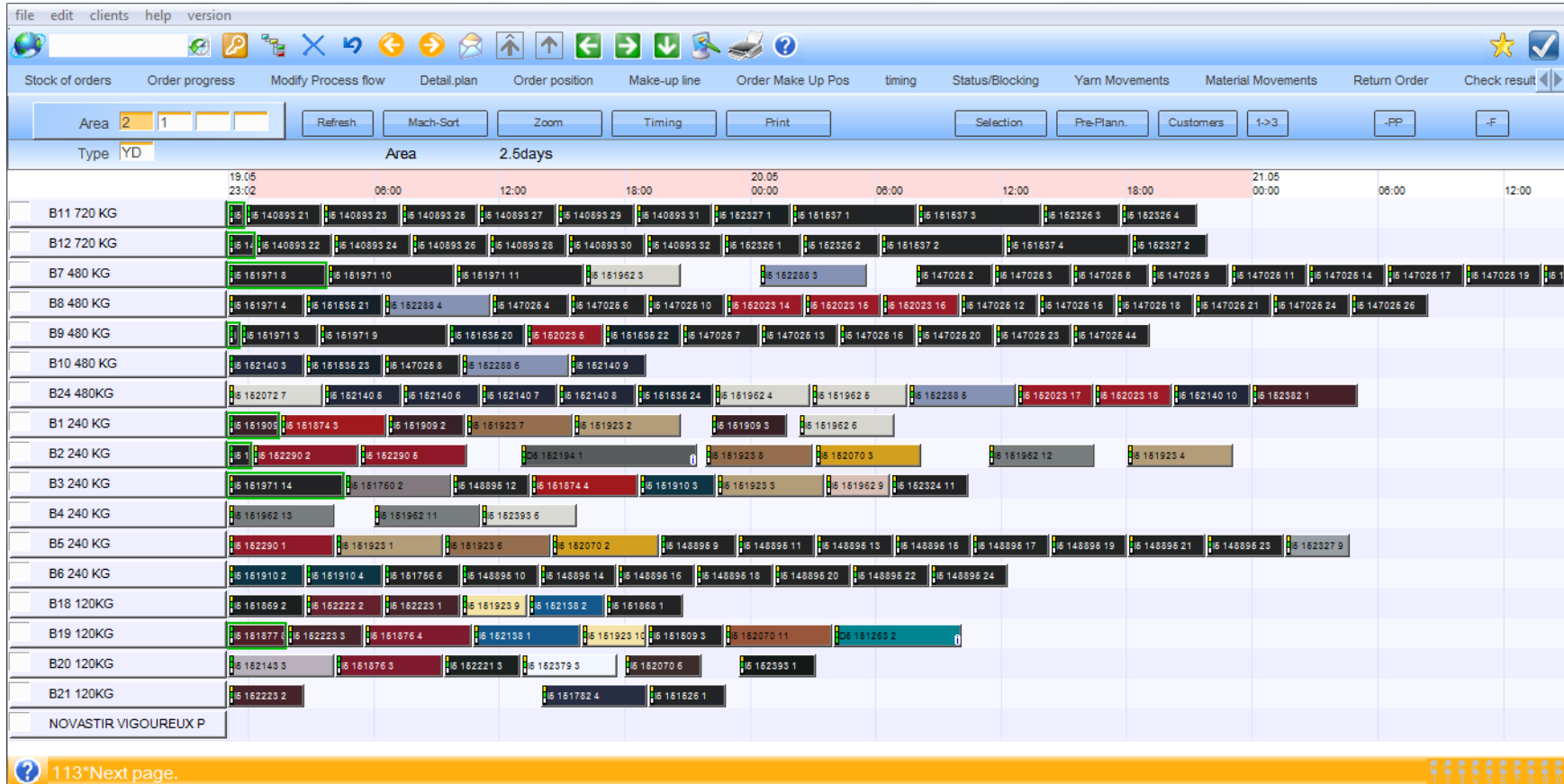
- Einstellwerte zentral in einer Datenbank verwalten, um Reproduzierbarkeit zu sichern.



Automatisierte Reihenfolgeplanung basierend auf

- Maschinen-Sollwerten
- Rezepturen
- Artikelmerkmalen
- Materialkompositionen
- Rüstzeiten





Auftragsbedarf aus
Feinplanung:

- Material
- Menge
- Lagerplatz
- Bestimmungsort

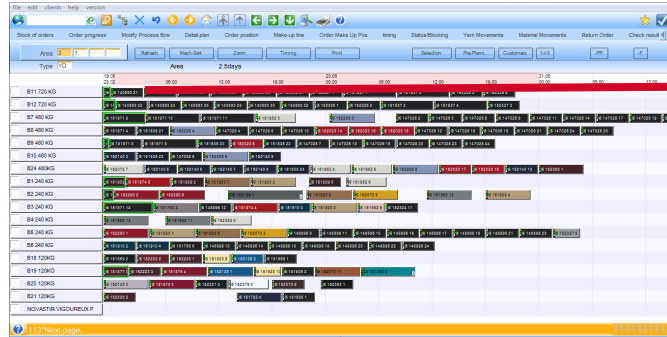


Präzise Materialbereitstellung
an der Maschine



Up to
+3% Efficiency

Zentrale Datenhaltung



Auftrags-
+
Einstelldaten



Ist-Werte





Maschinen-
Einstellwerte

Maschinensteuerung
SPS

Maschinendaten
(Ist-Werte)

Up to
+5% Efficiency

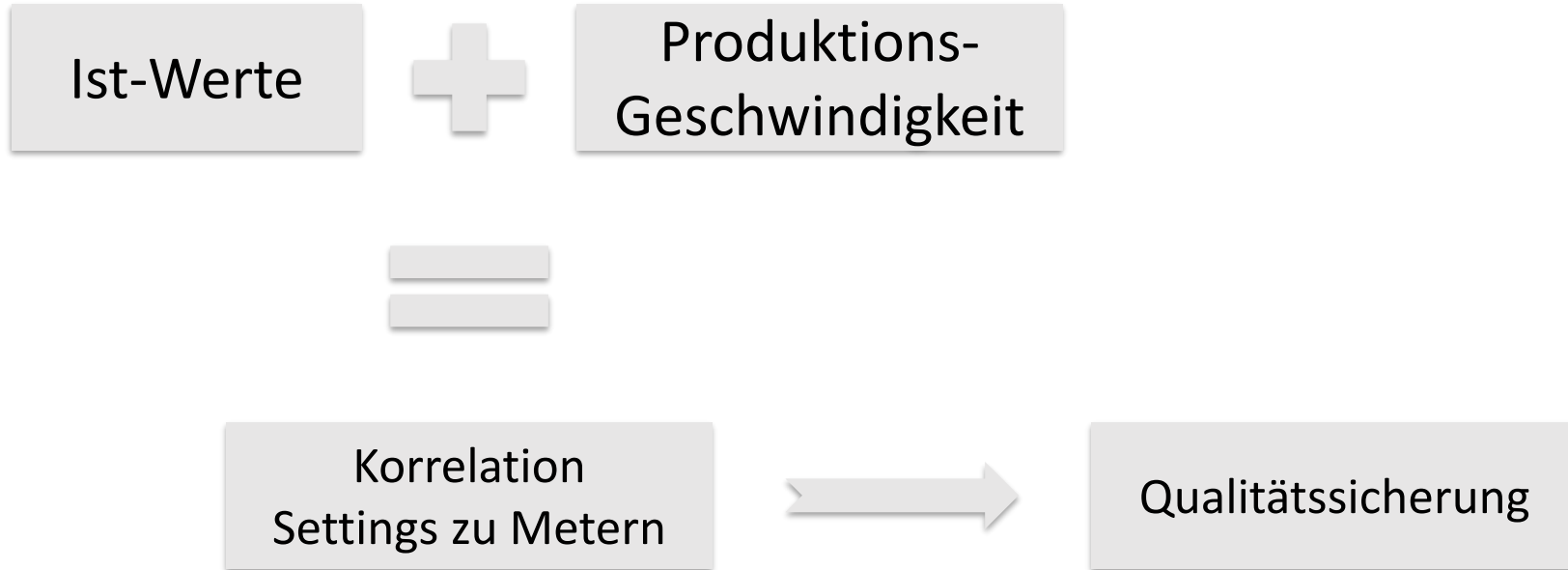
Up to
-100% Errors

- Reproduzierbarkeit
- Zeitersparnis
- Prozesssicherheit
- Alarmfunktion
- Rückverfolgbarkeit



- Raspberry Pi Microcomputer
- Mail Alarm
z.B. bei Temperaturschwankung







Digital Capability Center
Aachen



- Das eingebettete Video finden Sie unter:
- English: https://www.youtube.com/watch?v=9Pqhd_OOW1M
- Deutsch: https://www.youtube.com/watch?v=jhklRrzBM_I
- www.dcc-aachen.com
-

McKinsey & Company



RWTH AACHEN
UNIVERSITY

intex
consulting group

stonegarden
technologies

ark|group



EVOLVEA
Your Partner in Business



UBiMAX
Ubiquitous Computing Experts

- Schären
- Bandweben
- Thermofixieren
- Beschichten
- Digitaldruck
- Autocutting
- QC
- Fügen
- QC
- Verpackung
- Versand



Customer order
execution

Material planning
(MRP)

Capacity planning

Textile production-
Know How

Real time material
tracking through
production (Auto ID)

Production planning

Production data
collection

Order network
generation





Zusammenfassung





愛爾麗

ESPRIT

NET

Vernetzen wir uns!

Lukas Hartmann
Director Sales & Marketing
Intex Consulting GmbH

+4915775333440

L.Hartmann@intex-consulting.com



XING 

Linked 

Intex – IT runs for you.

Disclaimer

1. This disclaimer relates to any and all information contained in this sales presentation. The sales presentation comprises all typographically designed documents, whether in electronic or printed form, and their rendering by technical means. In particular, it comprises the product information and/or company information, graphics, photographs and oral and written explanations and statements shown herein which are made in connection with a promotional event or an academic event in connection with the rendering and/or letting by the presenting person(s) (hereinafter: publication).
2. All proprietary rights regarding the publication shall be due to Intex-Consulting GmbH (Intex), with a legal binding effect also for customers and potential future customers, and they must not be published or made accessible to third parties without the permission of Intex.
3. This publication shall expressly and exclusively serve for informational purposes and shall neither constitute contractual claims nor must it be used for the interpretation of contractual claims. It must not be incorporated or deemed as being incorporated into a contract, either. Thus, this publication shall exclusively not be the subject-matter of a possible licence or maintenance contract or any other agreement with Intex and shall not serve for the interpretation of such a contract or agreement. In particular all forward-looking statements in the publication shall be made subject to different risks and insecurities, which may lead to actual results that differ from the expectations. It is expressly pointed to the fact that forward-looking statements in the publication or in connection with the publication must in particular not be used as basis for a purchase decision. Thus, all rights and obligations shall exclusively result from the respective written agreements between Intex and the customer.
4. In particular, Intex shall not be obliged to actually commence or continue activities in any business segment shown in this publication or any presentation relating to it, or to develop, continue the development or to publish any functionality of the software mentioned herein. This publication or any presentation relating to it shall describe the business strategies and/or orientations of Intex and possible future developments, products and/or certain software platforms, in particular certain operating systems and/or data bases, subject to the possibility of change at any time and thus without any legal obligation of Intex. Therefore, they may be changed without stating reasons or giving notice by Intex at any time. Thus, the statements and information contained in this publication do not constitute any guarantee or any other legal obligation of Intex to supply and/or make available any certain material, software code or certain functionality or to warrant a certain future compatibility of the software and/or hardware. Thus, this publication is made available expressly without any guarantees and warranties whatsoever, express or implied, including without limitation the warranty of marketability, suitability for a specific purpose or any non-infringement of third-party rights.
5. Intex shall not guarantee the accuracy and completeness of the information, texts, graphics, links or any other information within the material. This publication is made available without any guarantee, express or implied, including without limitation the guarantee of profitability, suitability for a specific intent or non-infringement of third-party rights. Intex shall also not be responsible for any damage whatsoever, including without limitation, direct, special, indirect or consequential damage which may result from the use of the publication. This shall not apply to cases of intention or gross negligence. The statutory product liability regulations shall remain unaffected.
6. Intex shall not have any control of the information which you can access by using the "links" within this material, and Intex shall not support or promote the use of third-party websites by you and shall not accept any warranty whatsoever regarding third-party websites.

The information in this document is proprietary to Intex.

No part of this document may be reproduced, copied, or transmitted in any form or for any purpose without the express prior written permission of Intex Consulting GmbH.

The information contained herein may be changed without prior notice.

Some software products marketed / presented by Intex Consulting GmbH and its partners / distributors contain proprietary software components of other software vendors.

SAP is a registered trademark of SAP SE (formerly SAP AG).

Microsoft, Windows, Excel, Outlook, and PowerPoint are registered trademarks of Microsoft Corporation.

IBM, DB2, DB2 Universal Database, System i, System i5, System p, System p5, System x, System z, System z10, System z9, z10, z9, iSeries, pSeries, xSeries, zSeries, eServer, z/VM, z/OS, i5/OS, S/390, OS/390, OS/400, AS/400, S/390 Parallel Enterprise Server, PowerVM, Power Architecture, POWER6+, POWER6, POWER5+, POWER5, POWER, OpenPower, PowerPC, BatchPipes, BladeCenter, System Storage, GPFS, HACMP, RETAIN, DB2 Connect, RACF, Redbooks, OS/2, Parallel Sysplex, MVS/ESA, AIX, Intelligent Miner, WebSphere, Netfinity, Tivoli and Informix are trademarks or registered trademarks of IBM Corporation.

Linux is the registered trademark of Linus Torvalds in the U.S. and other countries.

Adobe, the Adobe logo, Acrobat, PostScript and Reader are either trademarks or registered trademarks of Adobe Systems Incorporated in the United States and/or other countries.

Oracle is a registered trademark of Oracle Corporation.

UNIX, X/Open, OSF/1, and Motif are registered trademarks of the Open Group.

Citrix, ICA, Program Neighborhood, MetaFrame, WinFrame, VideoFrame, and MultiWin are trademarks or registered trademarks of Citrix Systems, Inc.

HTML, XML, XHTML and W3C are trademarks or registered trademarks of W3C®, World Wide Web Consortium, Massachusetts Institute of Technology.

Java is a registered trademark of Sun Microsystems, Inc.

JavaScript is a registered trademark of Sun Microsystems, Inc., used under license for technology invented and implemented by Netscape.

Intex, Intex, intex ERP, intex ERP Business Suite, intex All-in-One, intex All-in-One designed for SAP ERP, SAP All-in-One intex, Intex Quality Star, Intex Scheduling PlanBoard and their components are trademarks of Intex Consulting GmbH in Germany and other countries.

All other product and service names mentioned are the trademarks of their respective companies.

Data contained in this document serves informational purposes only.

National product specifications may vary.