

Klieverik
OLDENZAAL - HOLLAND

Herzlich Willkommen!

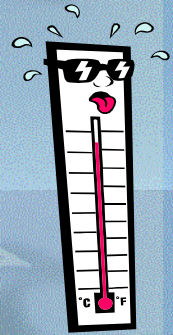
Klieverik Produkten

1. Naszverfahren
2. Transferdruckkalander
3. Laminierkalander
4. Laminier PUR Sprühanlage
5. Thermobonding Nonwoven

Drei Parameter



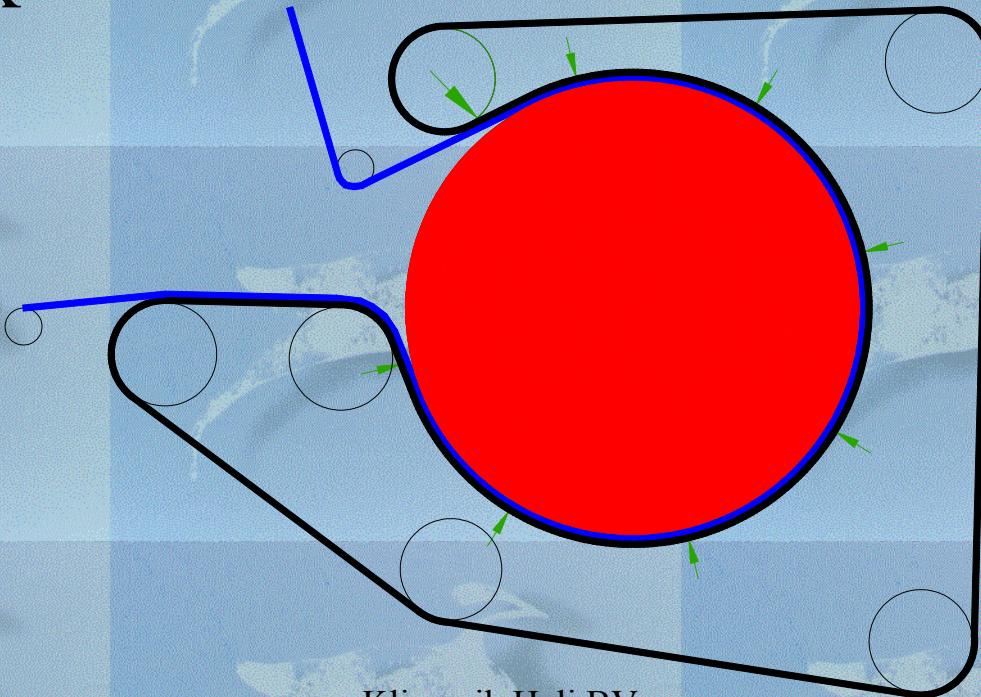
Druck



Temperatur



Zeit

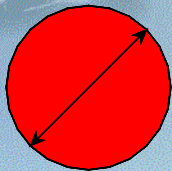




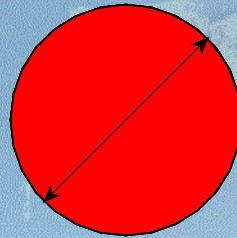
Diameter Heiztrommel bis 1.800 mm



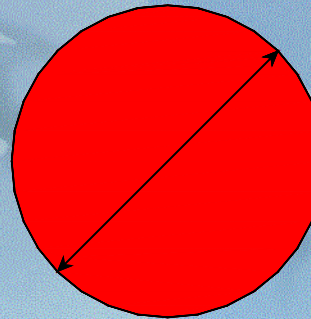
ø 500



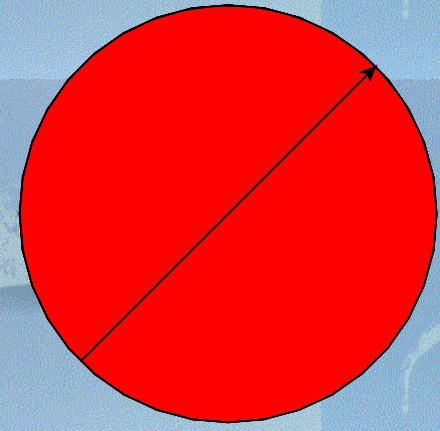
ø 760



ø 1000

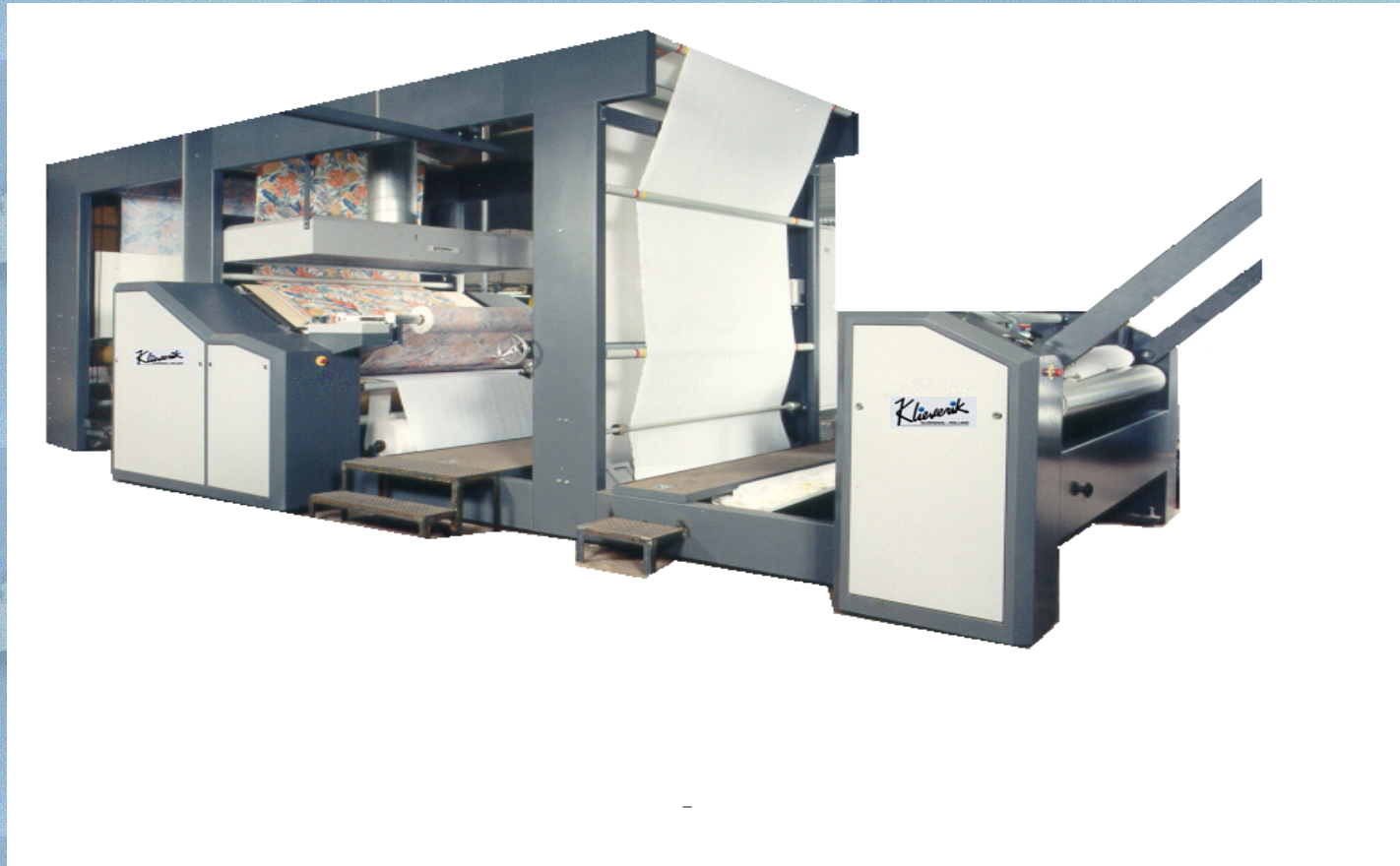


ø 1350



ø 1800

Transferdrucklinie

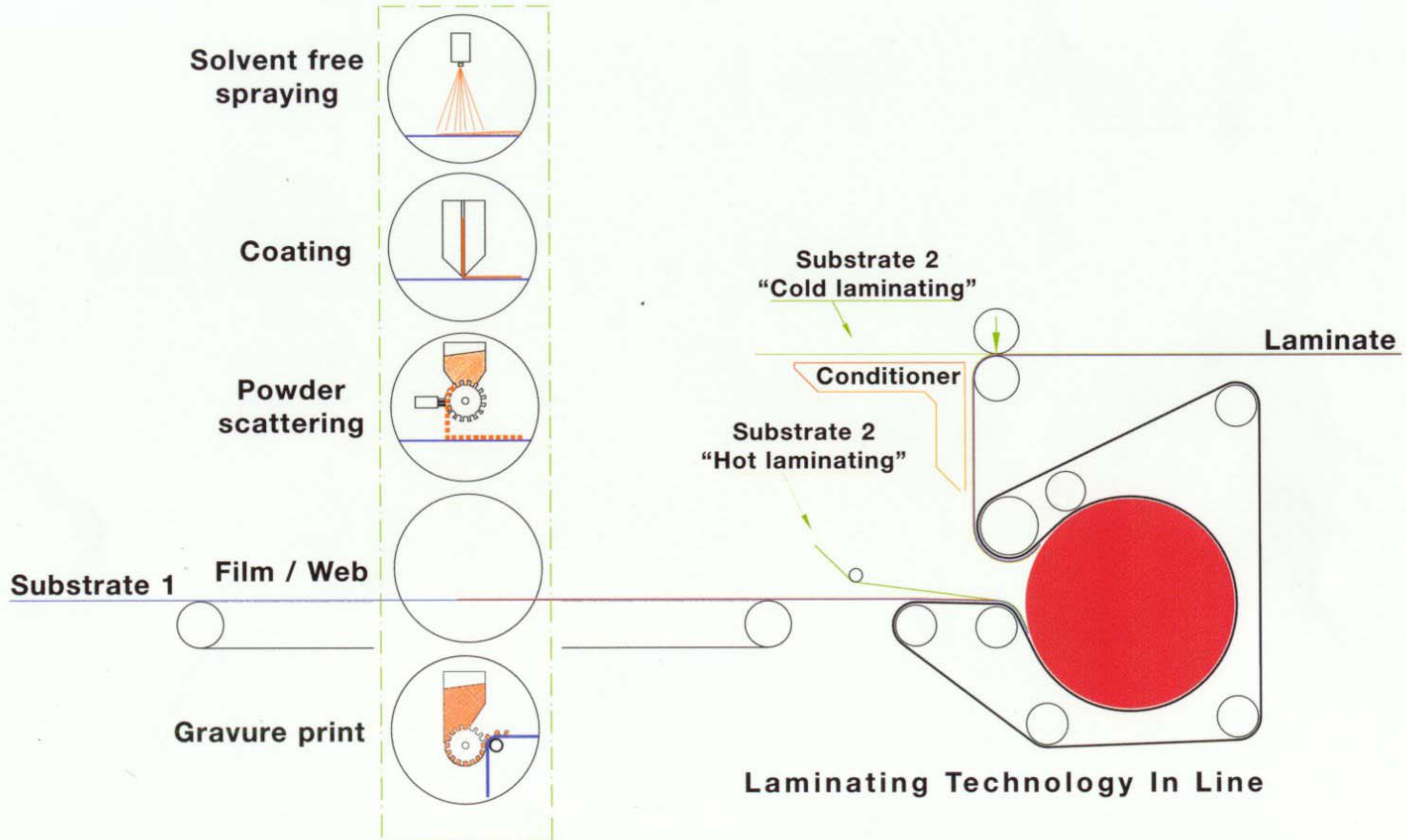


Laminierlinie



Laminieren; Verschiedene Applikationsmöglichkeiten

Application units for thermoplastic glue



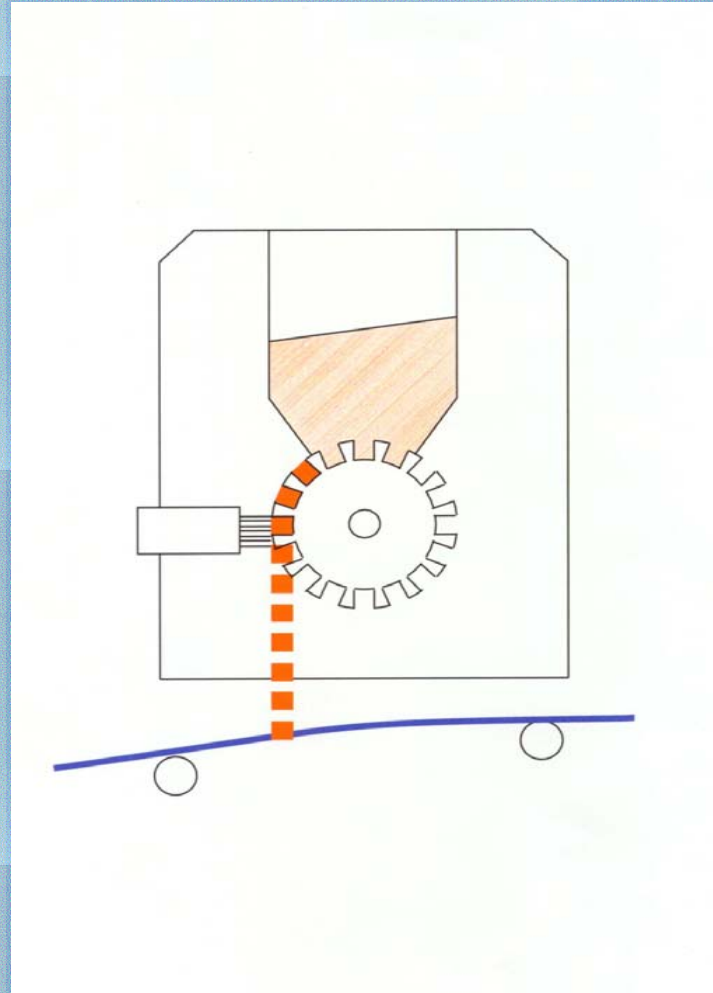
Laminieren; Anwendungsbereich

- Textilindustrie
 - › Modeartikel
- Autoindustrie
 - › Sitzbekleidung
 - › Paneele
- Schuhhersteller
 - › (innere) Sohlen
 - › Obermaterial
- Bekleidungsindustrie
 - › Einlagestoff
 - › Regenkleidung
 - › Kunstleder

Laminieren; Anwendungsbereich

- Sport
 - > Sportkleidung
 - > Sporttasche
 - > Masken
- Filter
 - > Luftfilter
 - > Flüssigkeitfilter
- Bau
 - > Geotextil
 - > Isoliermaterial

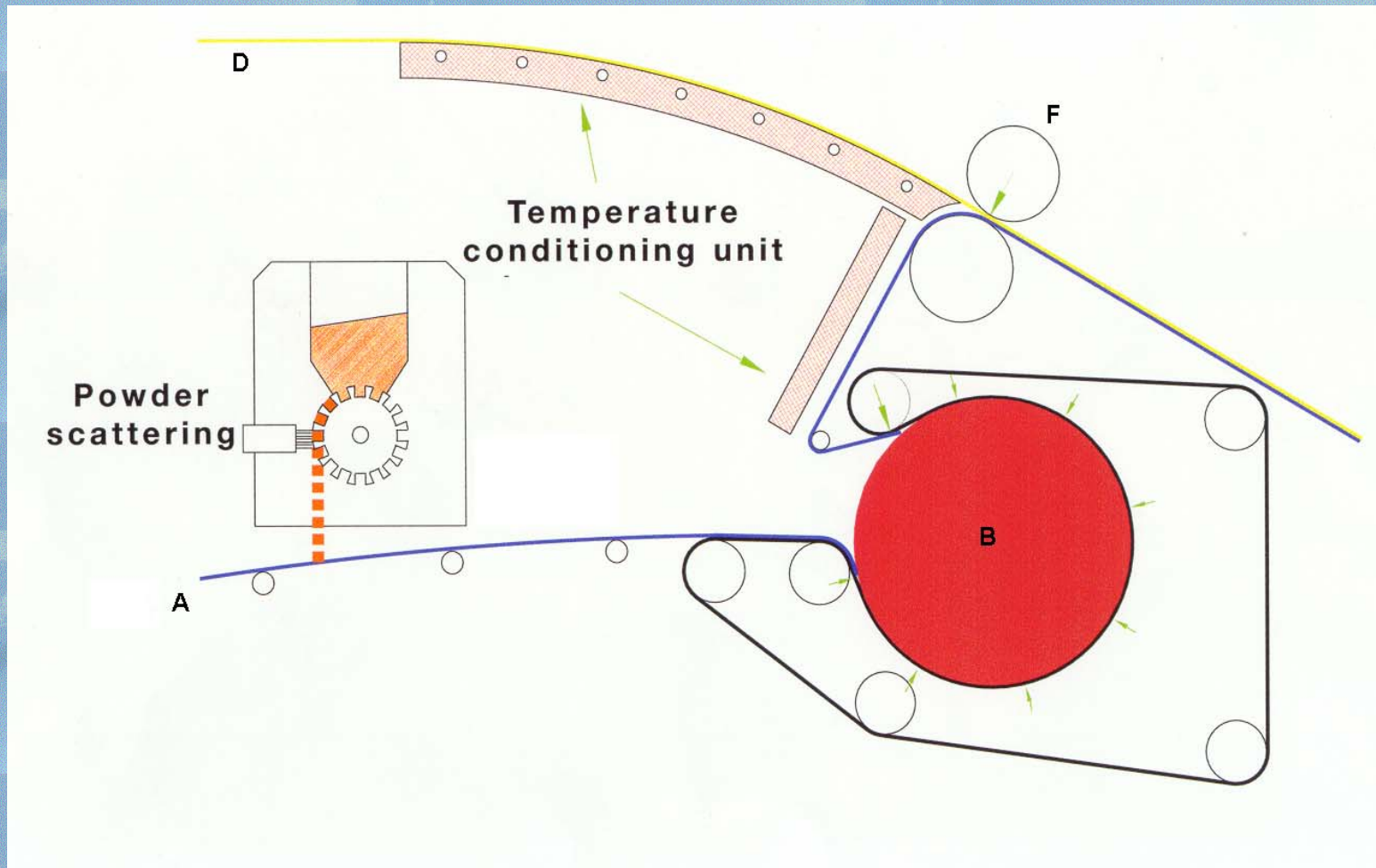
Pulverstreugerät (PSD)



Pulverstreuer

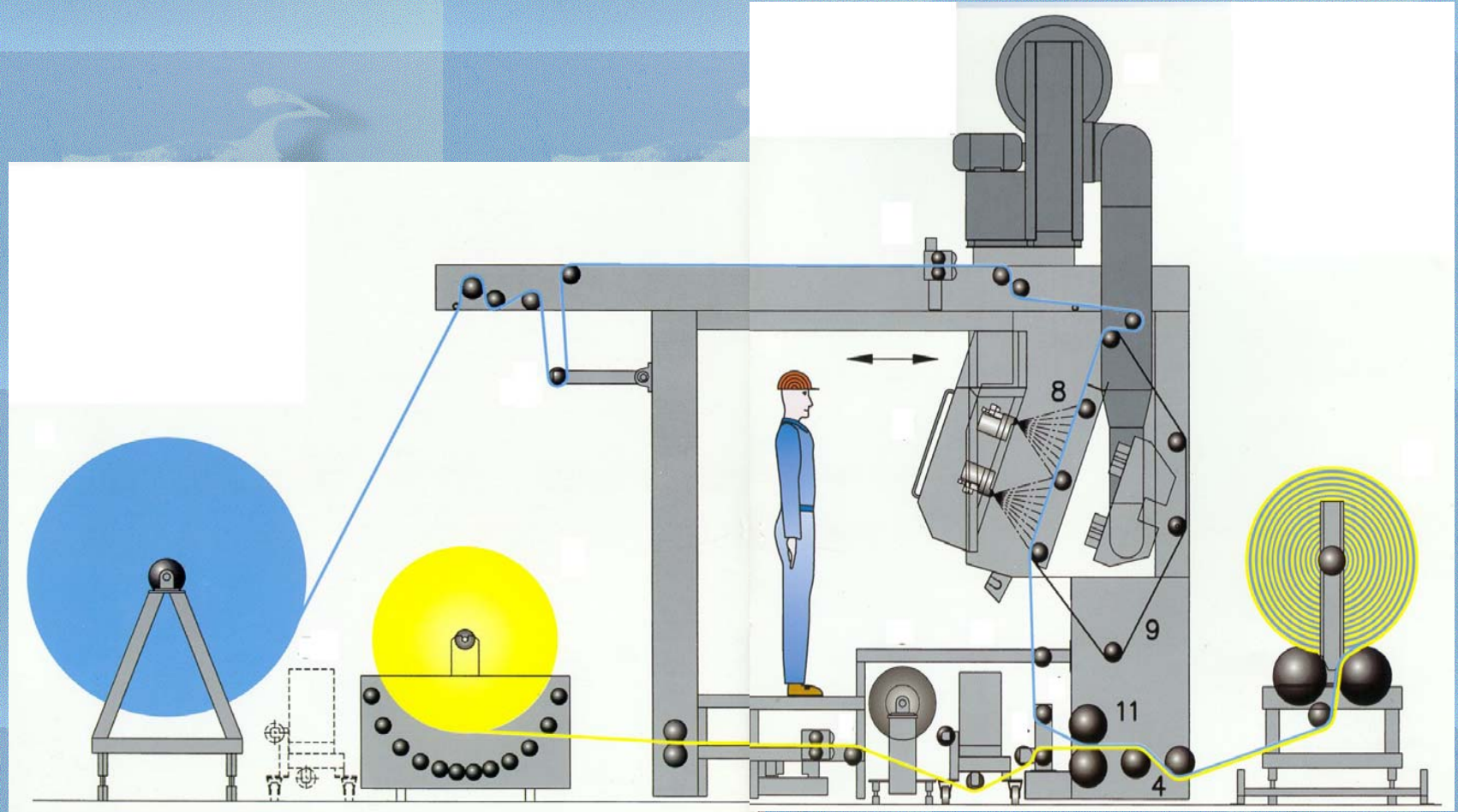
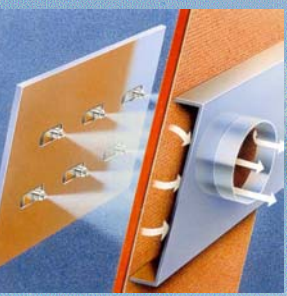


Ecosafe Anlage

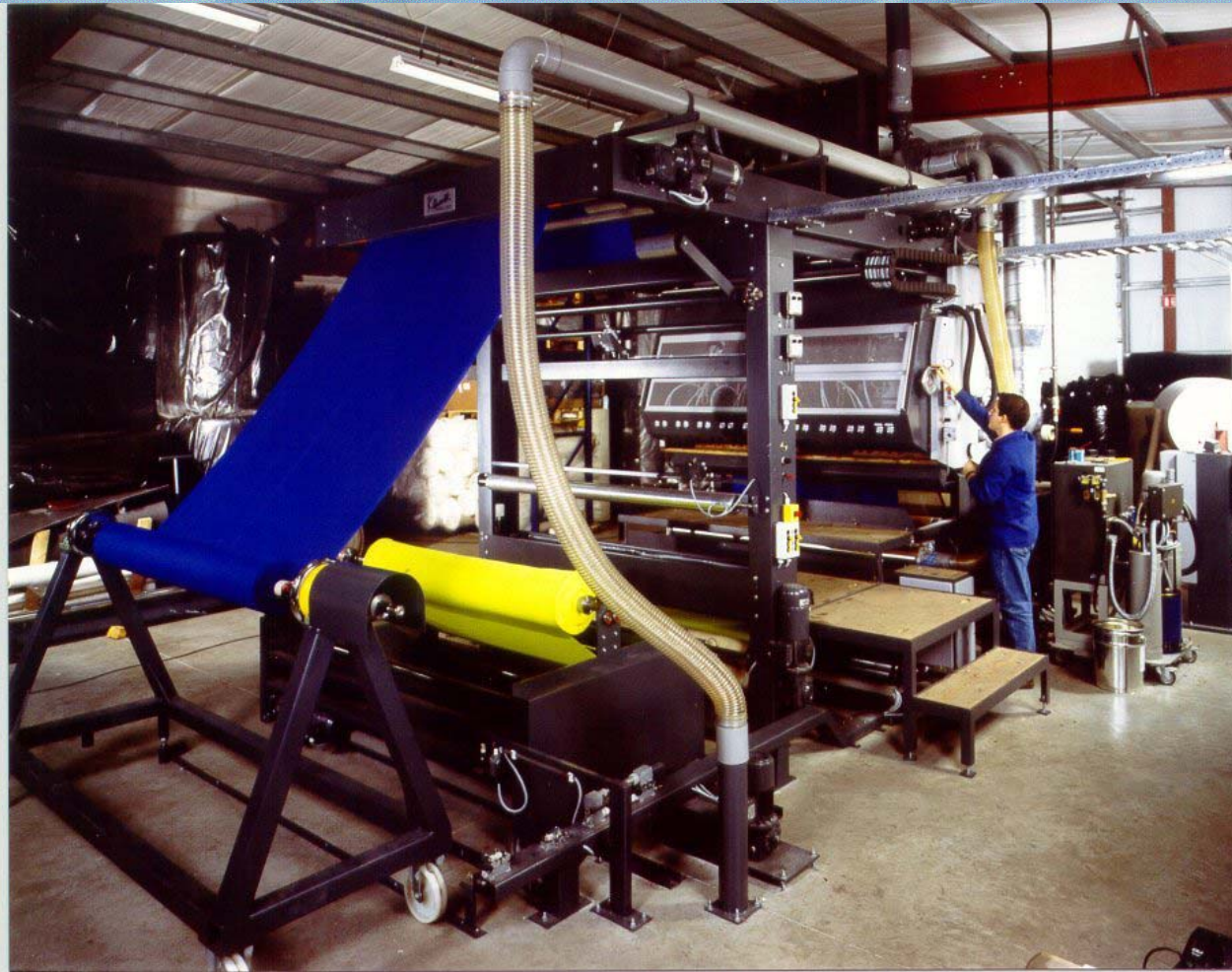




PUR SPRÜHLAMINIERANAGE



Sprühlaminieranlage



Klieverik
und
das Segment 'Non Woven':

eine allgemeine Darstellung

Non Woven ; Positionierung

Übliche Technologie für **THERMOBONDING**:

- **Hoher Druck Kalandr**

Mittels sehr hohen Druck wird das ‘Nonwoven’ (manchmal lokal) durchgehend verfestigen

- **Heiße Luft ‘Bonder’**

Mittels heiße Luft und Zeit wird das ‘Nonwoven’ lokal durchgehend gebunden

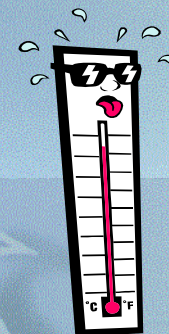
- **‘Verweilzeitbonder’**

vollflächige Kontaktwärme mit relativ längere Verweilzeit, höhere Temperatur und niedriger Druck

Drei Parameter



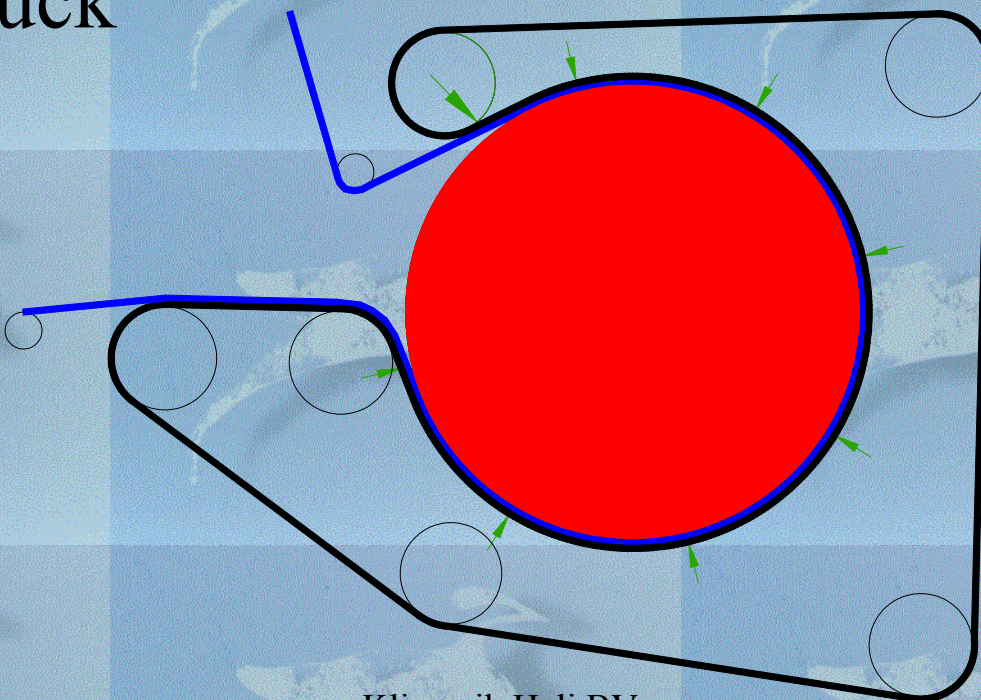
Druck



Temperatur

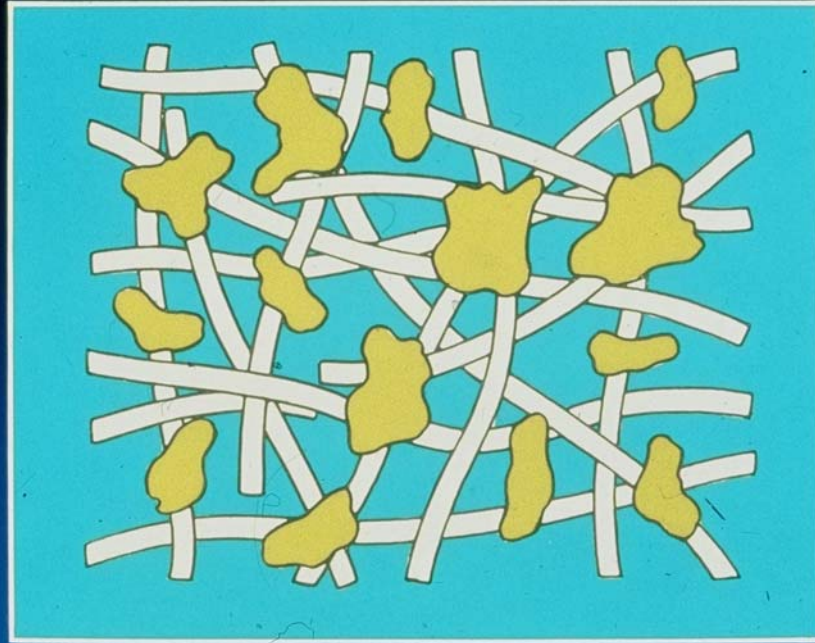


Zeit



PULVER

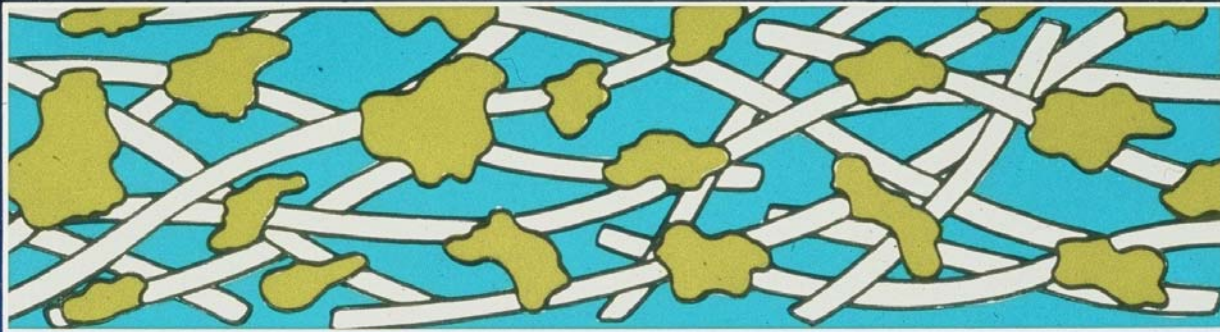
Powderbonded webstructure



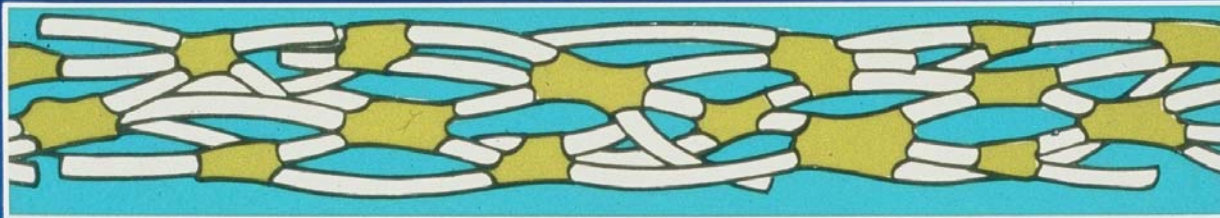
Querschnitt

Fibreweb cross section

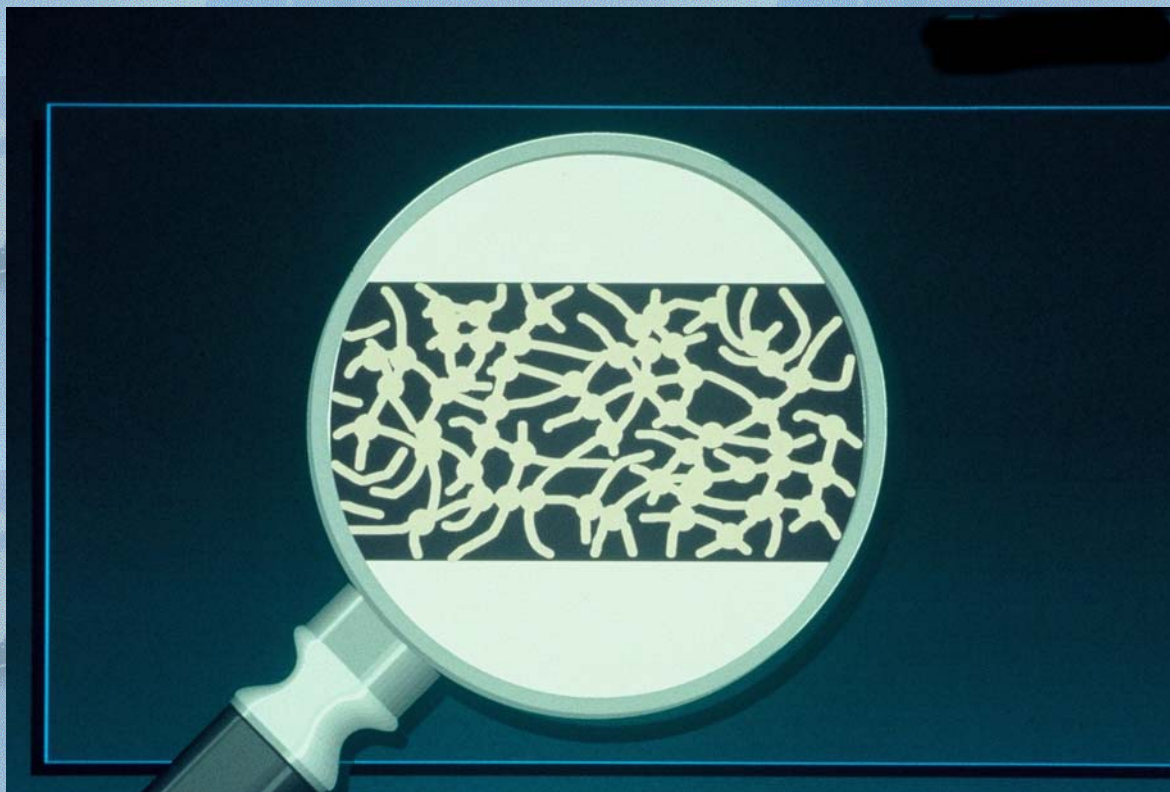
Without pressing



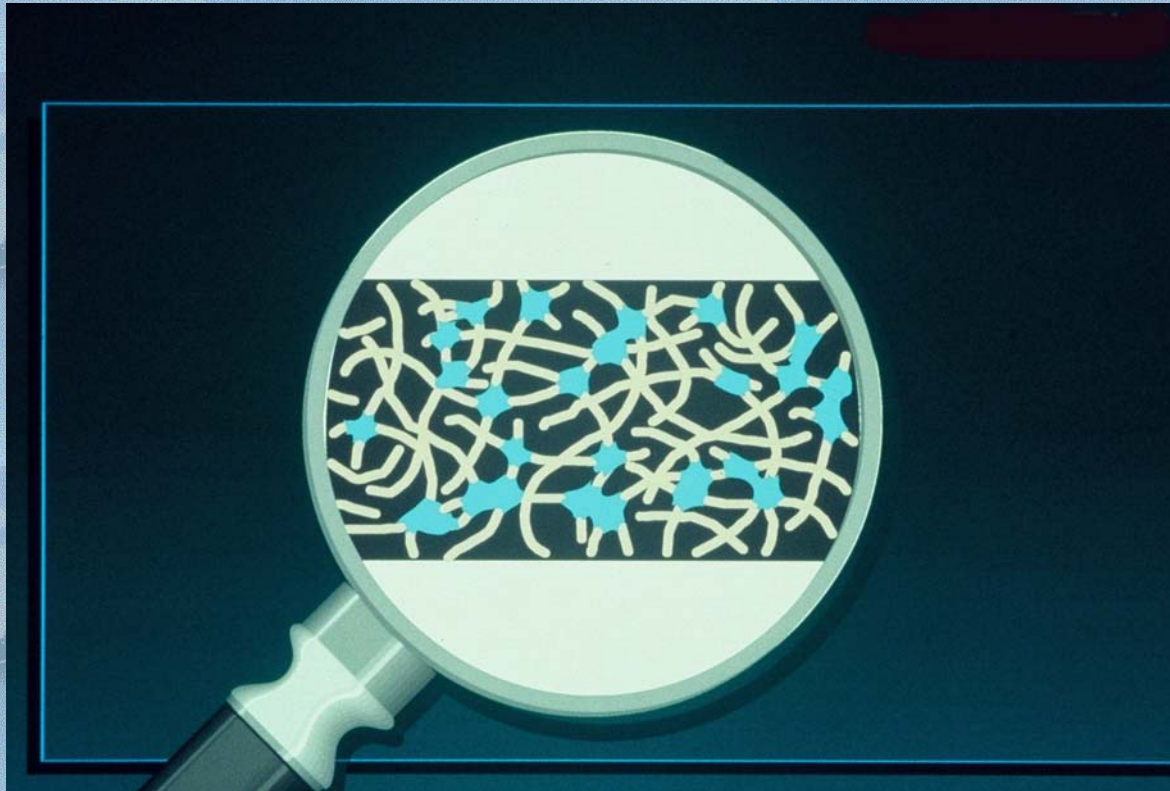
With pressing



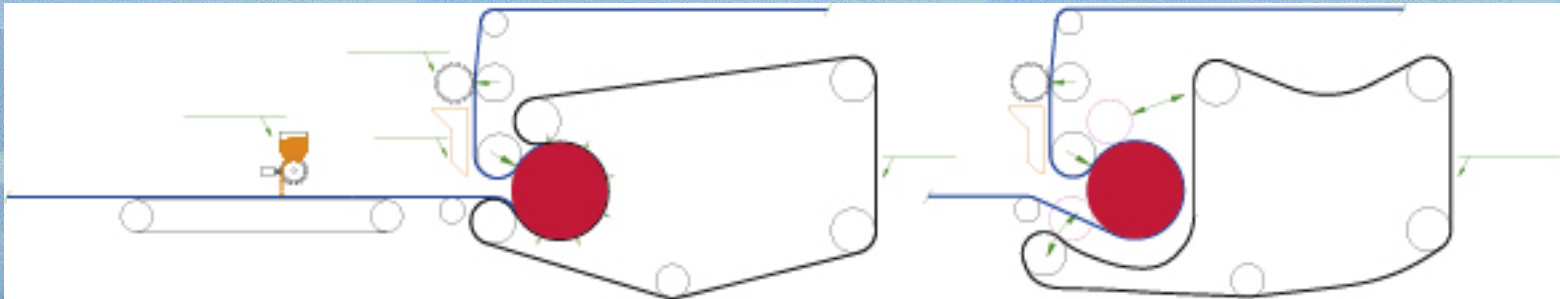
100% SCHMELZFASER



25% SCHMELZFASER

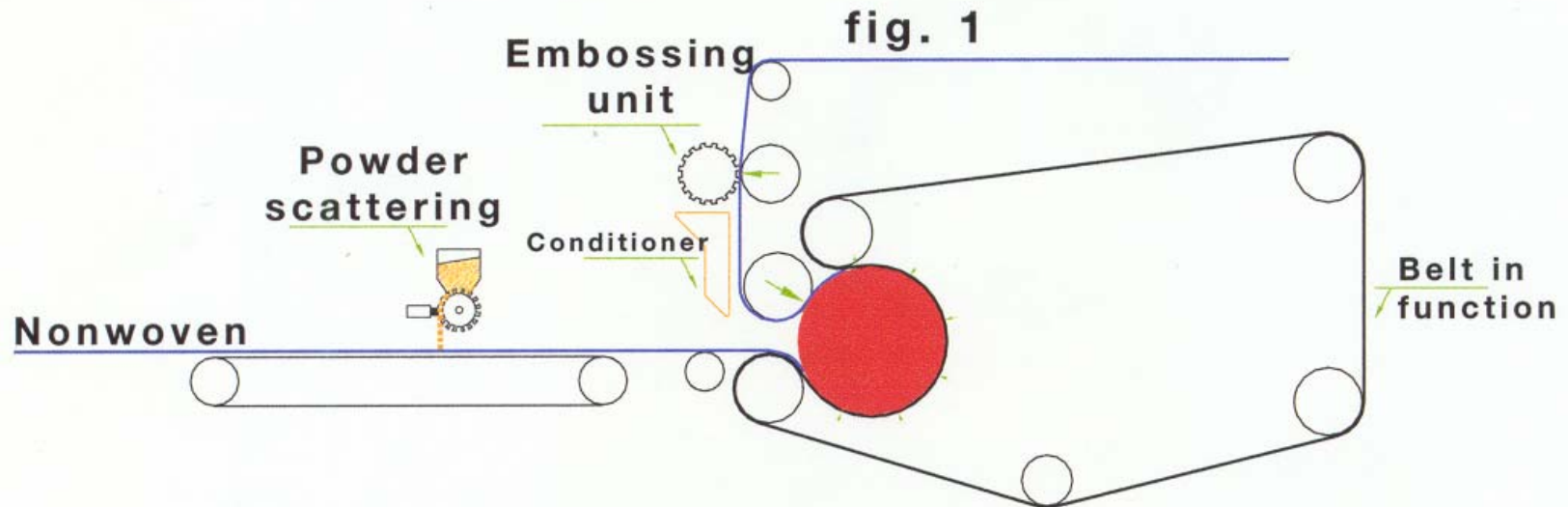


Non Woven; Spezifische 'Beltbonder'

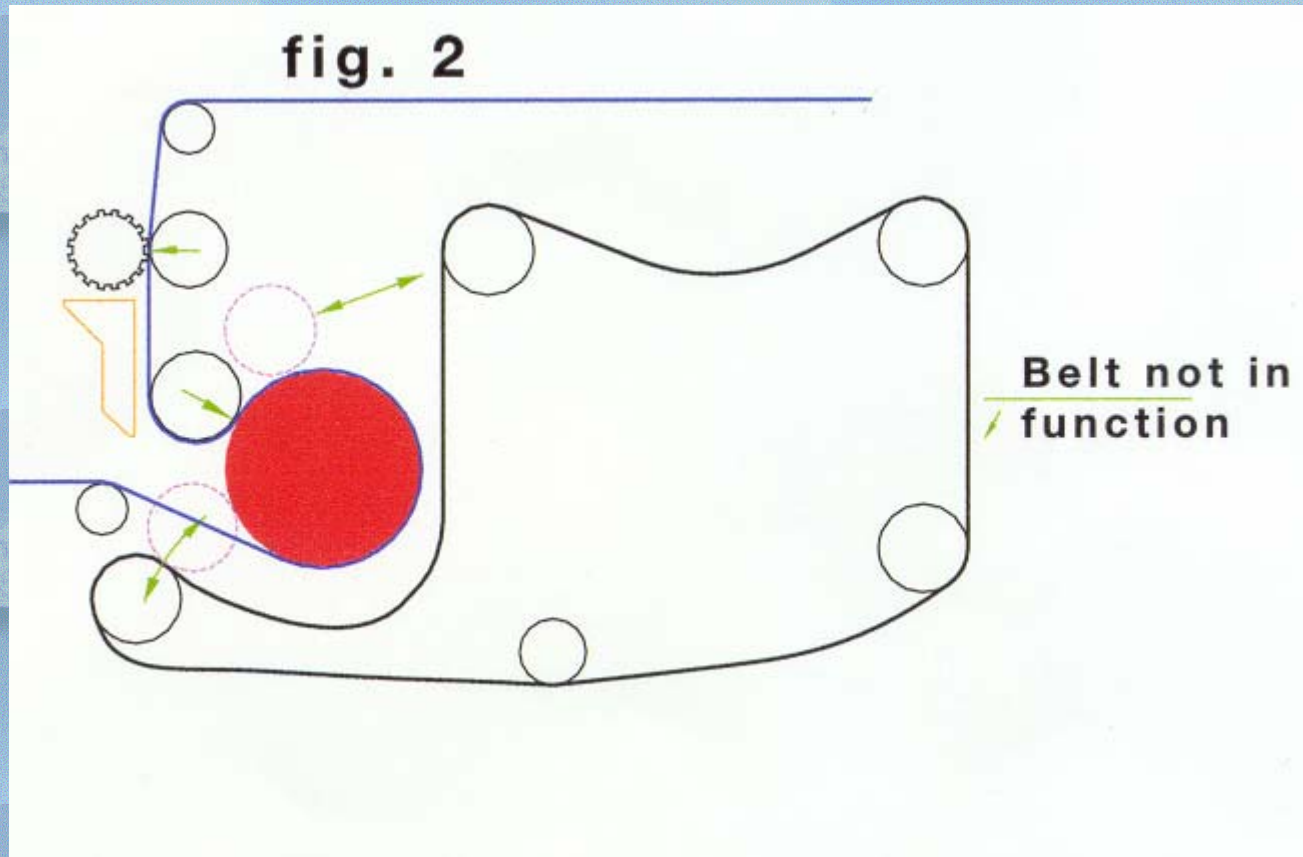


- bis zu 6 Metern
- Kombination möglich: mit oder ohne Band
- Kalibrierwalze/Laminierwalze
- gleichbleibende Druck und Temperaturen wegen spezifische Konstruktionen

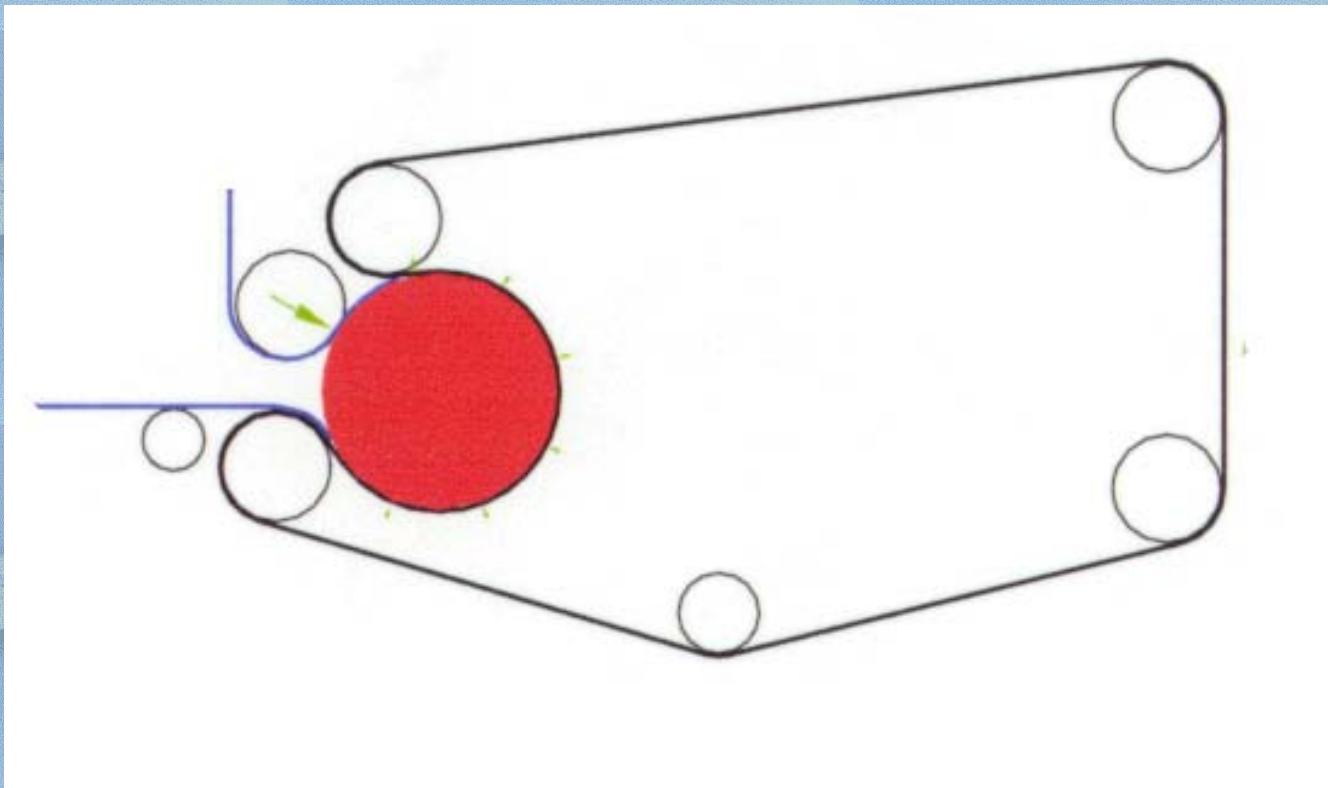
Non Woven; Specifische 'Beltbonder'



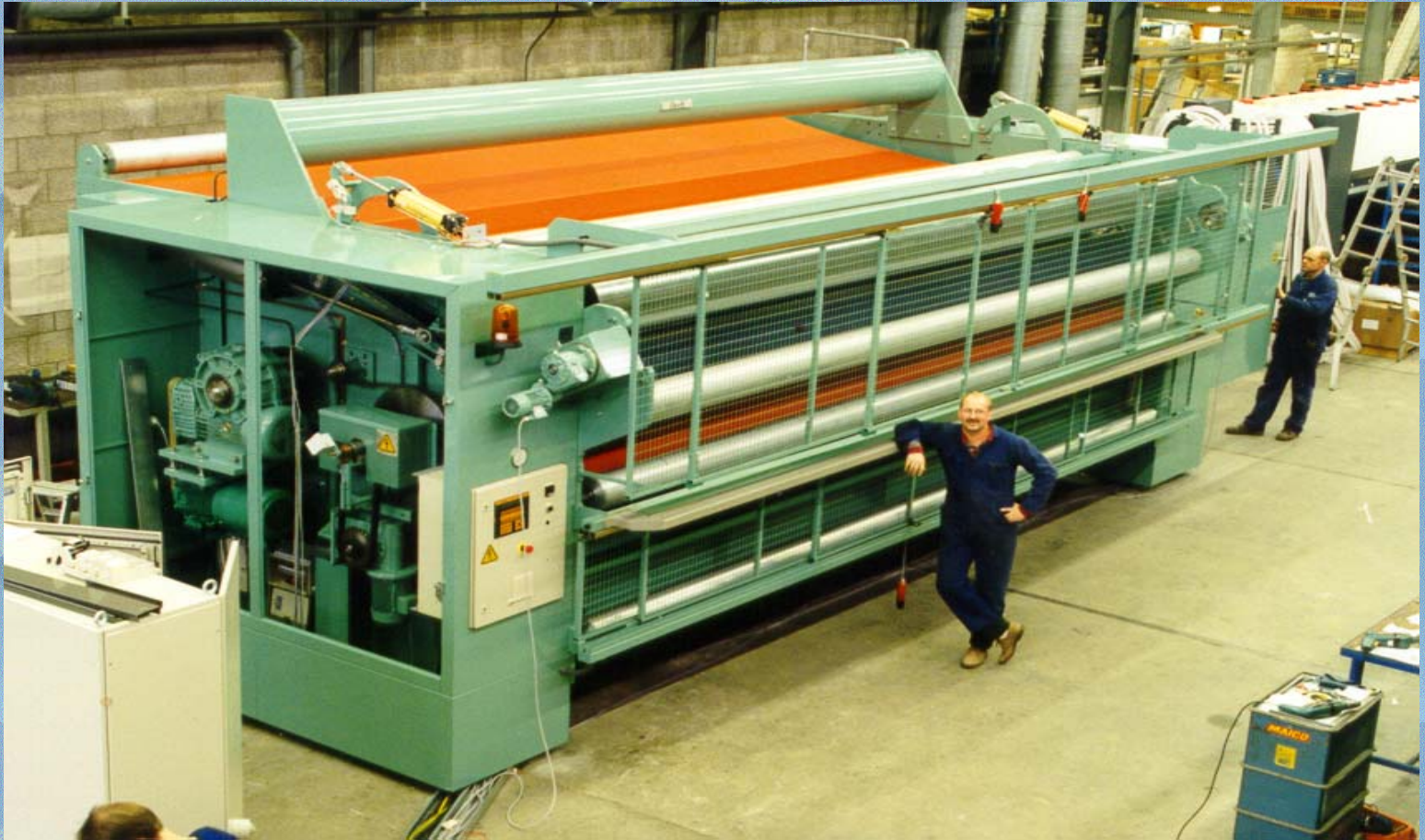
Non Woven; Specifische 'Beltbonder'



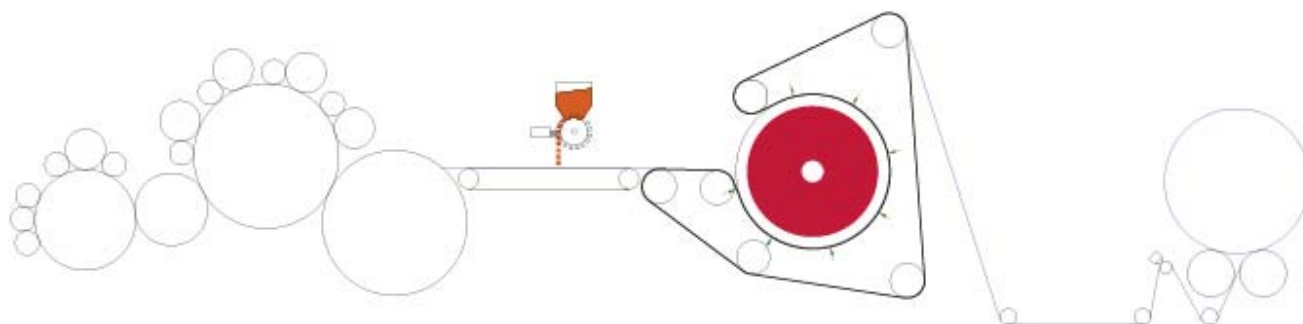
Kalibrierwalze:



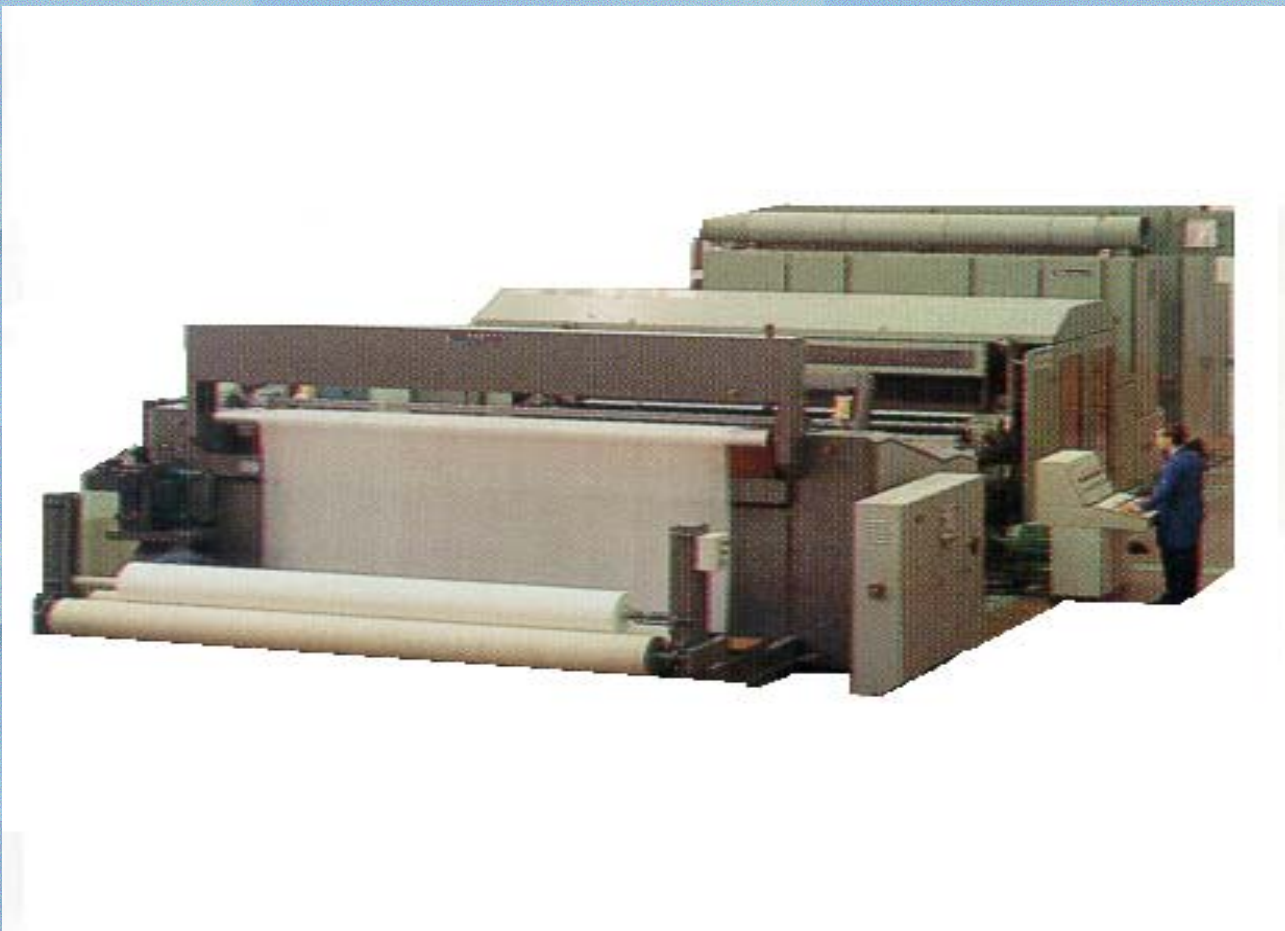
Nonwoven Kalander



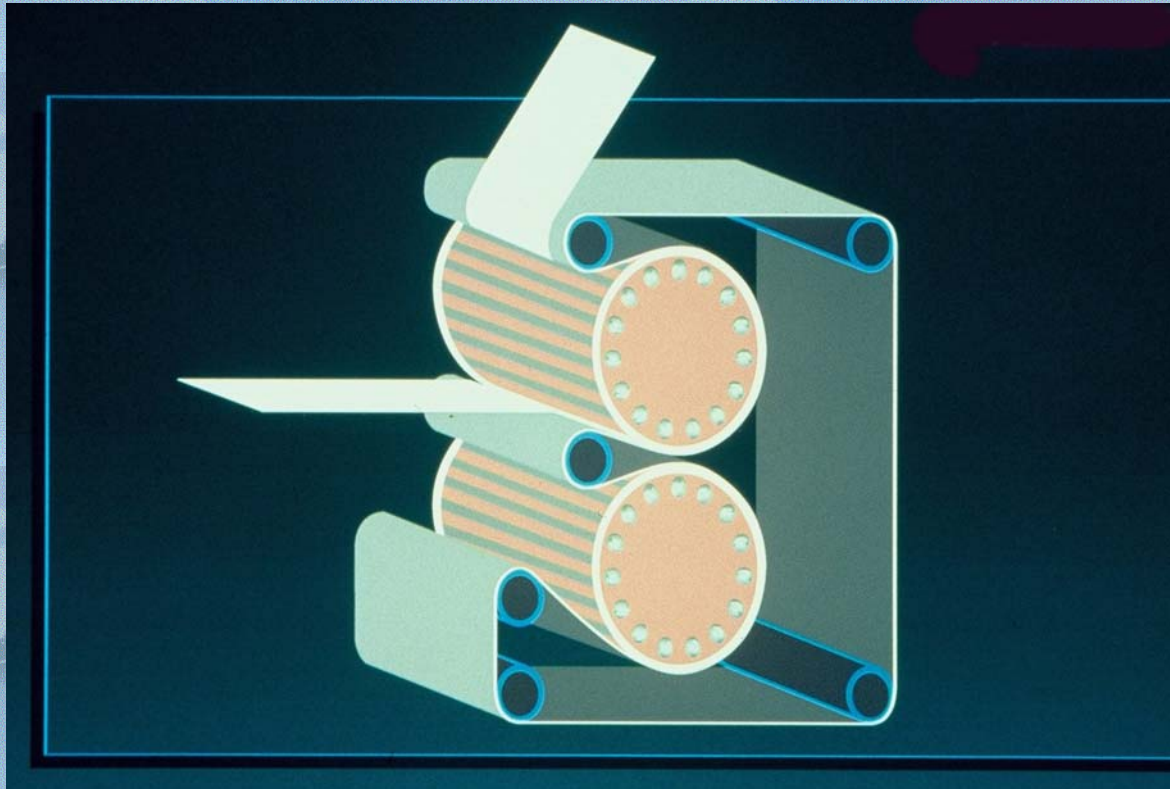
Spezifische 'Beltbonder' Inline



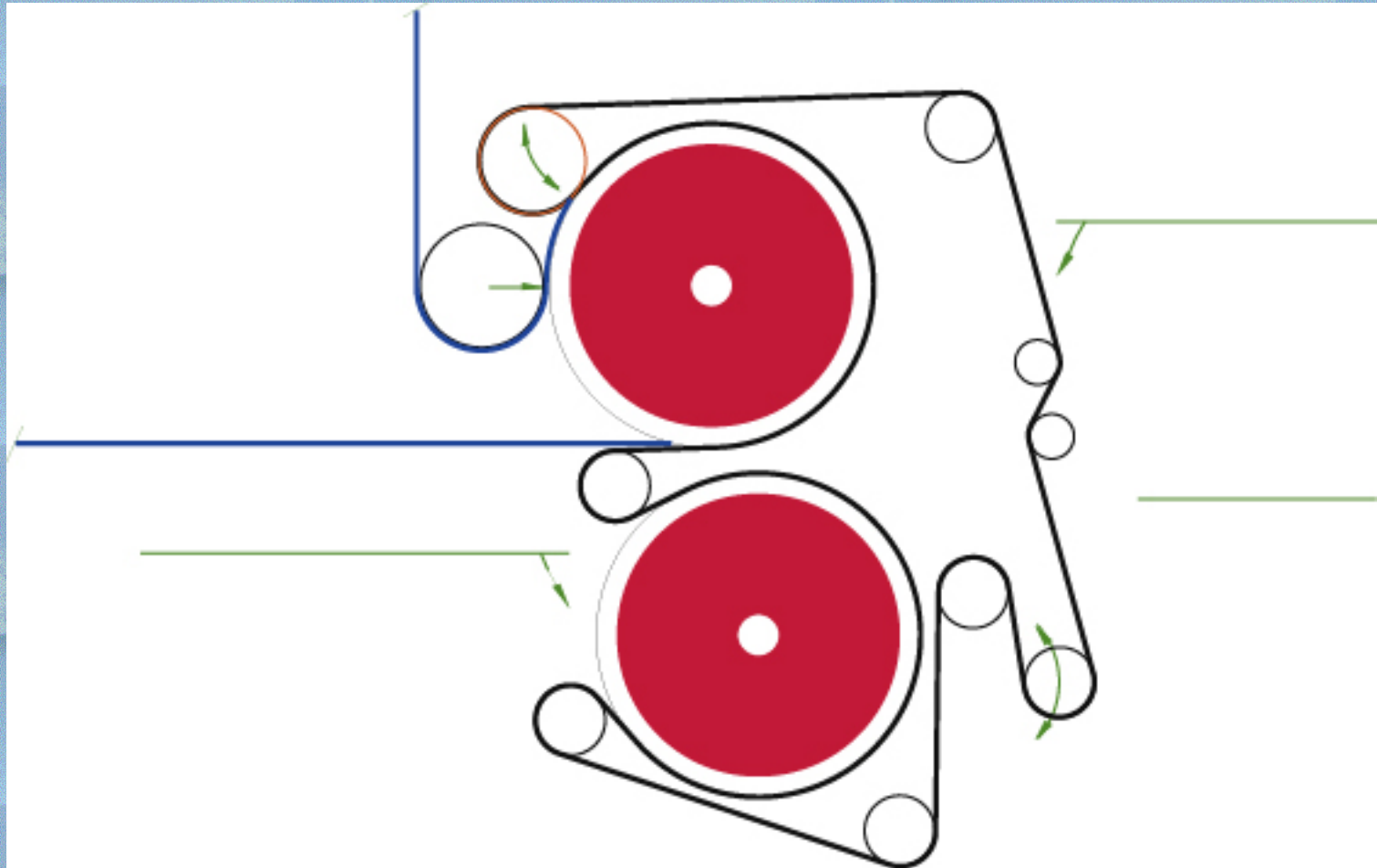
Nonwoven Kalander Inline



DOPPELSEITIG



Vliesstoff Zweitrommelbonder



Zweiseitige Behandlung in einem Gang



Fragen ?

Vielen Dank

Nico Hekman